



# Smart flexible system for end-to-end automation of fuel retail

*GasNet*



# Why *GasNet*?

**25+**

**years of expertise in automation  
software development**

**150+**

**partner companies  
in 9 countries**

**4000+**

**filling stations automated**

Participation in large-scale projects in Russia, Mongolia, Tajikistan, Uzbekistan

**GasKit v.9.0**

**Filling station  
automation**



**GasNet  
covers  
all areas  
of fuel retail**

**GasNet Office**

**Management system  
of filling station  
network**



**GasNet  
covers  
all areas  
of fuel retail**





**GasNet**  
covers  
all areas  
of fuel retail

**GasNet Fuel Truck**

**Sealed Parcel Delivery  
System**



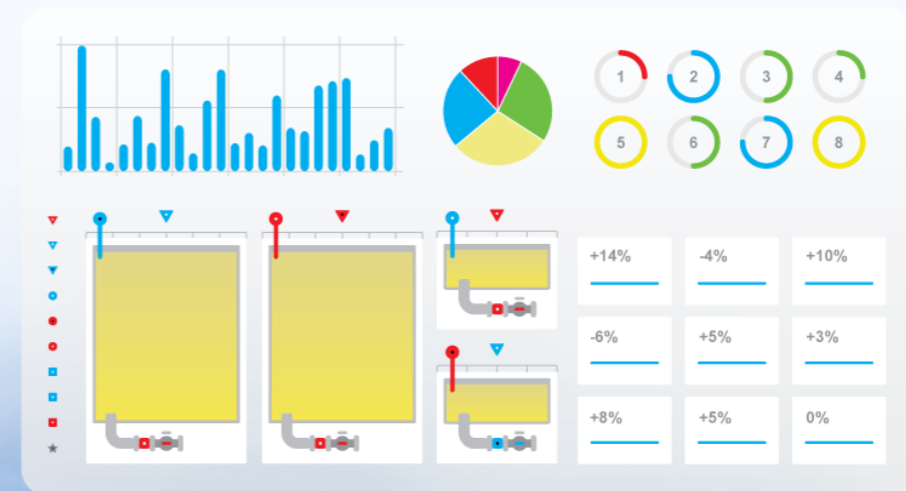
[www.gasnet.ng](http://www.gasnet.ng)



**GasNet**  
covers  
all areas  
of fuel retail

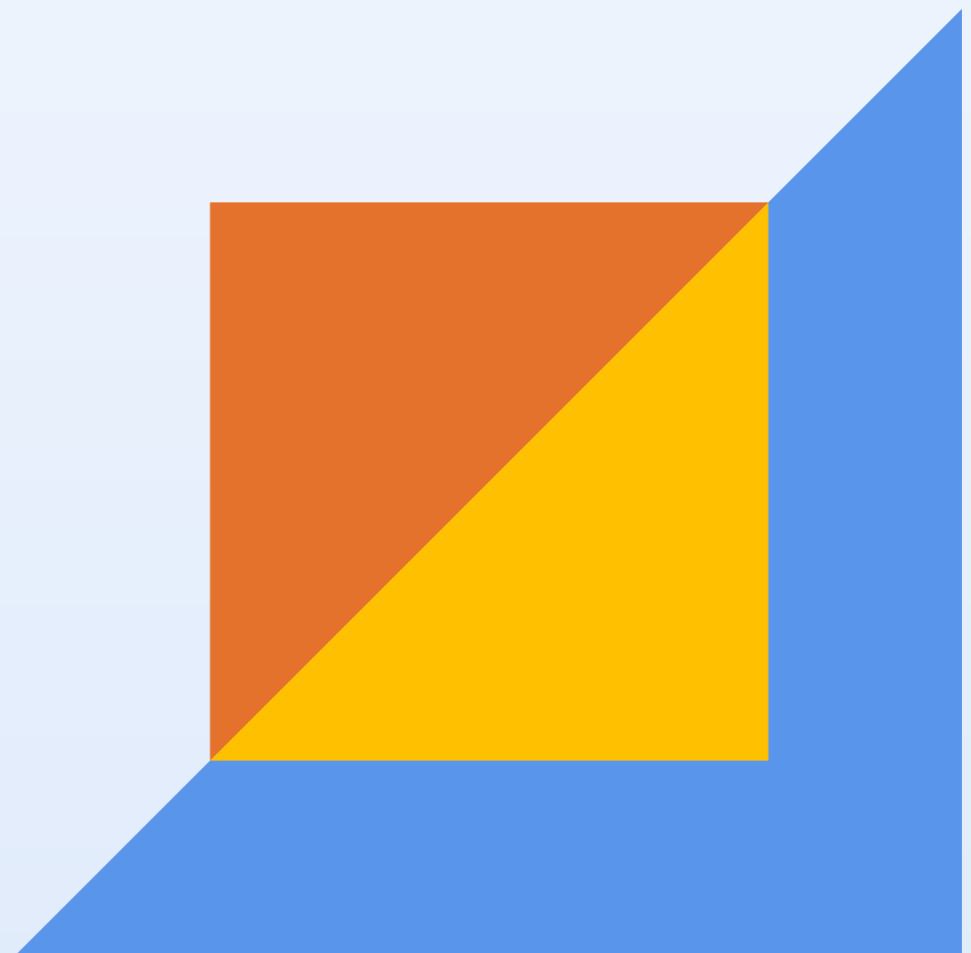
## GasKit Tank Farm

*Fuel management  
system for tank farms*



***GasKit* v.9.0**

**Automation  
of filling station**



# GasKit v.9.0 functionality:

- GasKit is connected to all pumps and ATGs (if present)
- All actions with pumps are immediately reported to GasKit
- GasKit requests data from ATGs (if present) at regular intervals
- Data is collected to local database
- Data is sent to server



# Why *GasKit v.9.0*?



- **Secure data channel between station and server**
- **Wide range of supported pumps & ATGs**
- **Electricity issues handled**
- **Wide operating temperature range: from -40°C to +70°C**
- **LPG & LNG supported**

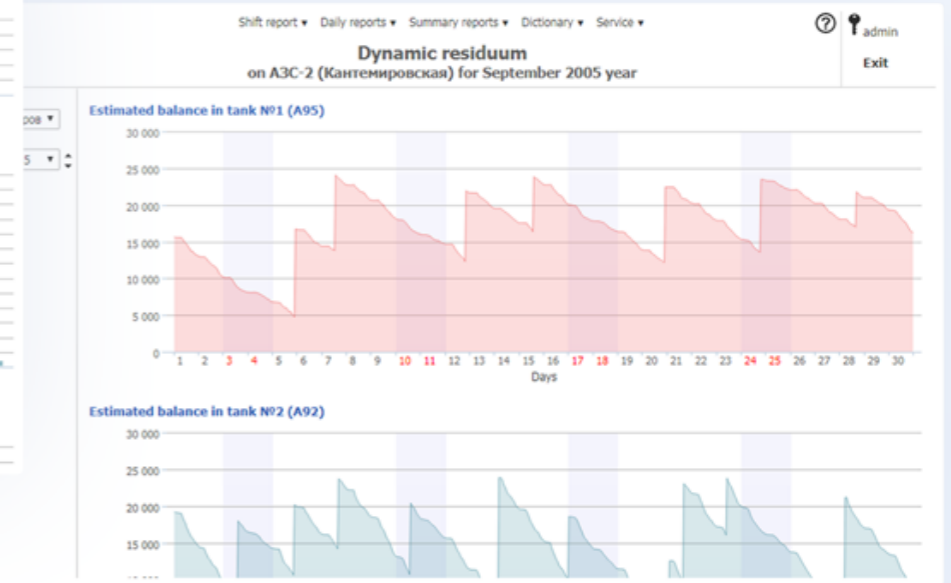
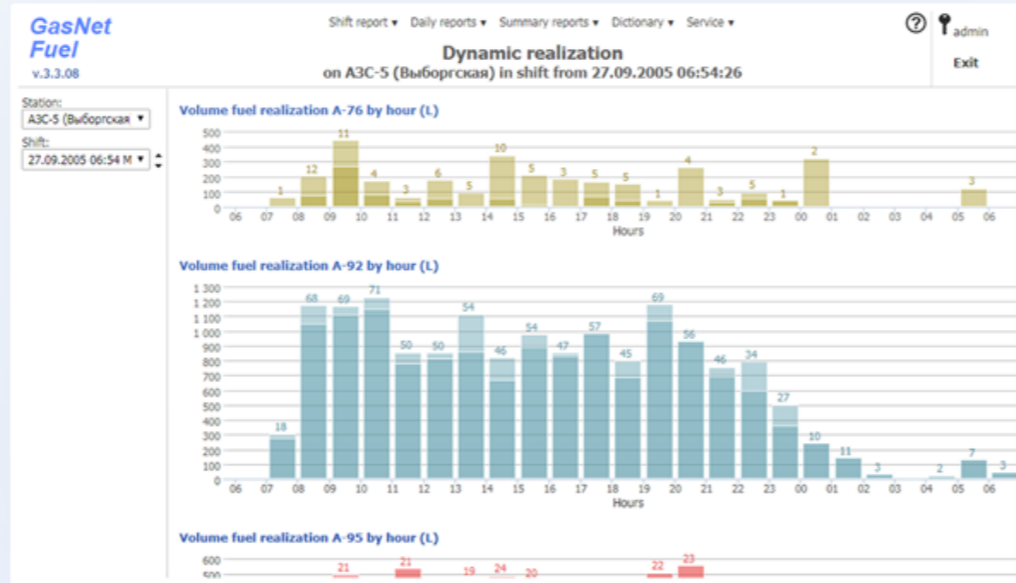


# GasKit Dashboard

Integral part of GasKit v.9.0

Allows to perform real-time monitoring of **all filling stations** in the network.





**GasNet Fuel v.3.3.08** Shift report • Daily reports • Summary reports • Dictionary • Service • admin

**Predictions for remainders**  
All gas stations for 14 september 2005 year

Date: Wed 14.09.2005 Prognosis period: 1 week

Tank	min-max	A3C-1 (Ланская)																				
		Wed 14.09.2005	Thu 15.09.2005	Fri 16.09.2005	Sat 17.09.2005	Sun 18.09.2005	Mon 19.09.2005	Tue 20.09.2005														
Tank-2 A76	0.2 - 11.8	8.4	7.8	7.5	7.3	6.7	6.2	6.1	5.3	4.8	4.6	3.9	3.6	3.5	2.9	2.6	2.4	1.7	1.4	1.2	0.7	
Tank-3 A92	0.2 - 14.7	7.9	6.3	5.0	4.7	3.2	1.7	1.3														
Tank-1 DT	0.2 - 12.7	3.4	2.7	2.0	1.5	0.9	0.3	0.1														

Tank	min-max	A3C-2 (Кантемировская)																			
		Wed 14.09.2005	Thu 15.09.2005	Fri 16.09.2005	Sat 17.09.2005	Sun 18.09.2005	Mon 19.09.2005	Tue 20.09.2005													
Tank-2 A76	0.2 - 50.0	16.7	16.1	15.8	15.6	14.9	14.6	14.4	13.8	13.3	13.1	12.4	12.3	12.2	12.0	11.6	11.5	10.9	10.6	10.4	9.7
Tank-2 A92	0.2 - 50.0	23.6	21.7	19.8	19.4	16.9	15.4	14.8	12.6	10.5	10.0	7.8	6.2	5.9	4.8	3.8	3.3	1.1			
Tank-1 A95	0.2 - 24.2	19.4	18.4	17.3	17.1	15.8	14.7	14.5	13.3	12.0	11.7	10.3	9.8	9.6	9.1	8.4	8.2	6.8	5.8	5.6	4.4
Tank-4 DT	0.2 - 25.0	10.5	9.7	8.5	8.0	6.8	5.8	5.3	4.1	2.8	2.1	1.2	0.3								

Tank	min-max	A3C-3 (Полостровский)																			
		Wed 14.09.2005	Thu 15.09.2005	Fri 16.09.2005	Sat 17.09.2005	Sun 18.09.2005	Mon 19.09.2005	Tue 20.09.2005													
Tank-2 A76	0.2 - 50.0	16.7	16.1	15.8	15.6	14.9	14.6	14.4	13.8	13.3	13.1	12.4	12.3	12.2	12.0	11.6	11.5	10.9	10.6	10.4	9.7
Tank-2 A92	0.2 - 50.0	23.6	21.7	19.8	19.4	16.9	15.4	14.8	12.6	10.5	10.0	7.8	6.2	5.9	4.8	3.8	3.3	1.1			
Tank-1 A95	0.2 - 24.2	19.4	18.4	17.3	17.1	15.8	14.7	14.5	13.3	12.0	11.7	10.3	9.8	9.6	9.1	8.4	8.2	6.8	5.8	5.6	4.4
Tank-4 DT	0.2 - 25.0	10.5	9.7	8.5	8.0	6.8	5.8	5.3	4.1	2.8	2.1	1.2	0.3								

Shift report • Daily reports • Summary reports • Dictionary • Service • admin Exit

**Fuel report (L)**  
on АЗС-2 (Кантемировская) in shift from 26.09.2005 06:33:21

Table control balances by counters

Fuel	Balance at shift start	Received for shift	№ pump	Counter indications		Expense by counter	Total expense by counters	Test fuelling	№ tank	Balance at end of			+/-	
				By shift start	By shift end					Fill height	Water filling	Actual balance		Booking remains
A-76	21 840.00	L	5	1 799 911.00	1 800 051.00	140.00	959.00	L	3	206.70	cm	20 907.50	20 881.00	+26.50
A-92	13 585.20		1	1 851 551.00	1 851 926.00	375.00	3 943.00		2	110.30		9 623.10	9 642.20	-19.10
A-95	22 065.80		1	708 269.00	708 412.00	143.00	1 897.00		1	200.00		20 224.00	20 208.80	+15.20
DT	15 749.20	+7 840.00	5	1 091 214.00	1 091 785.00	571.00	2 545.00		4	206.30		21 082.30	21 044.20	+38.10

Fuel sales (L) and goods

Pay mode	A-76	A-92	A-95	DT	Total fuel	Total goods	Total
L × p/L	939.00 × 13.60	3 933.00 × 16.80	1 812.00 × 18.00	2 545.00 × 15.10	9 229.00	59	144 448.76

# GasNet Office

## Management system for filling station network



Collecting complete and detailed data from all filling stations, **GasNet Office** provides comprehensive and up-to-date reports, which allows to perform effective business planning, reduce expenses and implement target-oriented optimizations.



# GasNet Office

- suite of web applications providing total control over all activities within filling station network





## GasNet Fuel

collects fuel transaction data from all filling stations offering a wide range of up-to-date reports and thorough analytics.



## GasNet Cards

is non-cash payment and loyalty system intended for online authorization of discount and fuel cards.

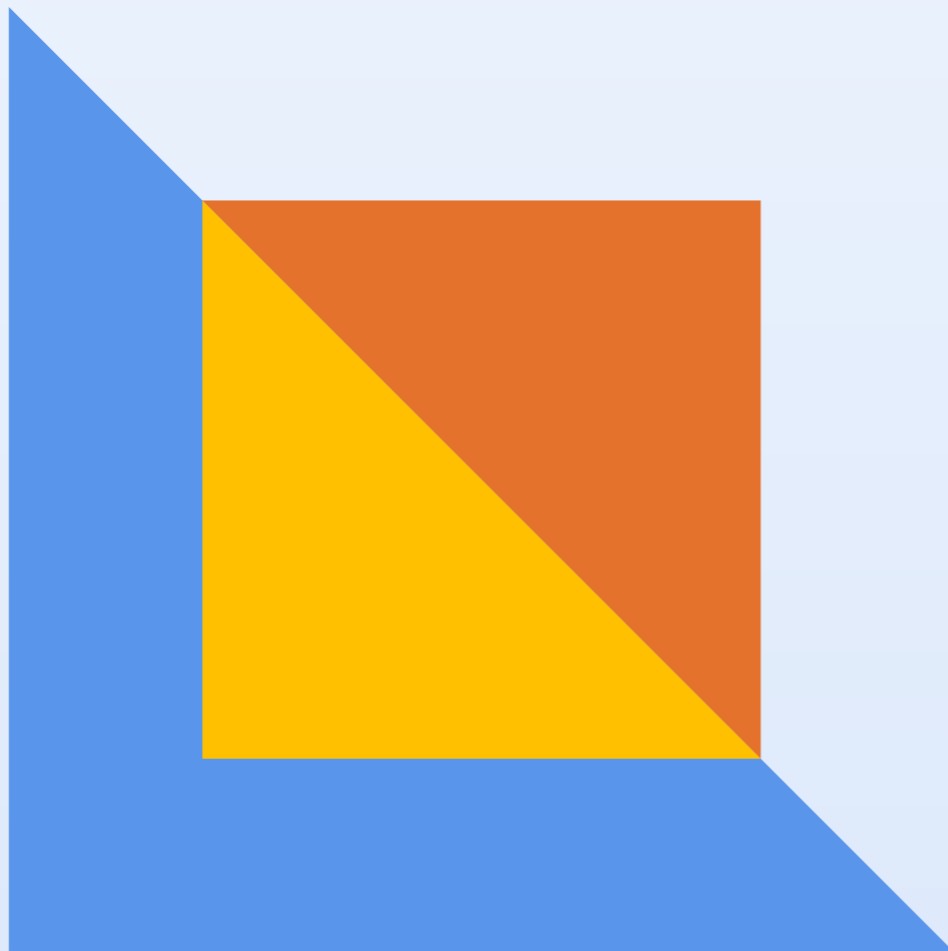


## GasNet Goods

is intended for accounting and management of C-Store goods within filling station network.

# *GasKit* **Tank Farm**

**Fuel management system  
for tank farm**

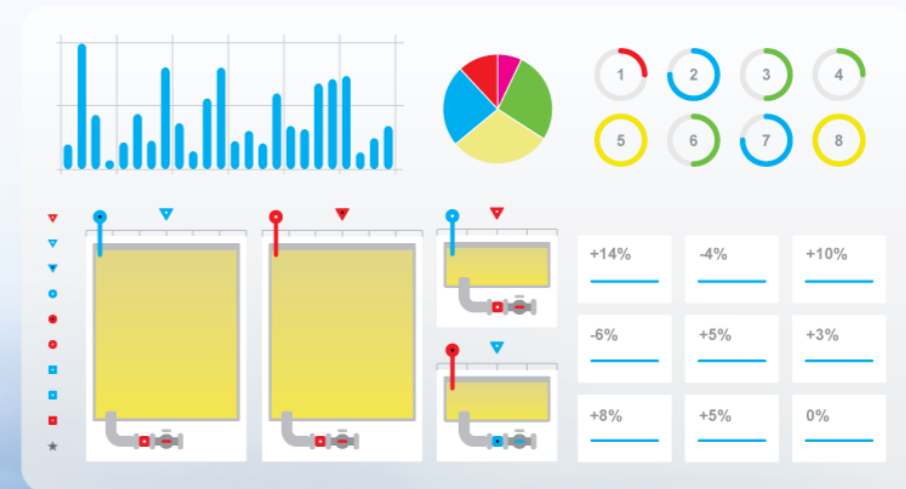


- real-time monitoring of fuel level in tanks
- management of equipment for loading fuel to trucks
- accounting and recording of all fuel transactions
- real-time remote control of all tank farm activities

**GasKit Tank Farm is integrated with GasNet Office, which allows to trace fuel from its loading to tank farm to its sale at filling station.**

## **GasKit Tank Farm**

***Fuel management system for tank farms***



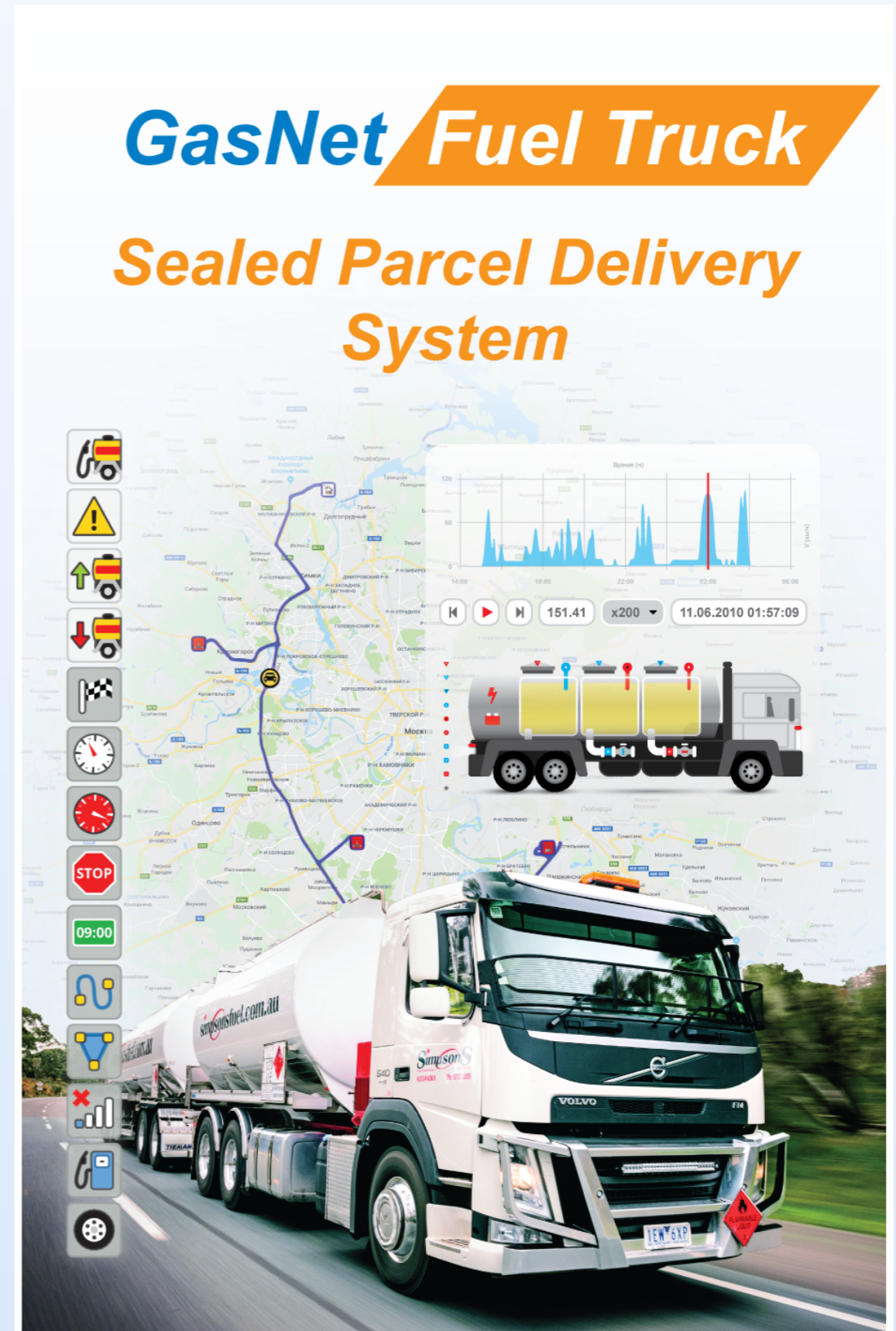




# *GasNet Fuel Truck*

**Sealed parcel delivery system**

- real-time location of each fuel truck
- real-time monitoring of all sensor states for each fuel compartment;
- SMS emergency notification
- car track & all sensor states history at any given time
- track & history visualization in play mode
- automatic failure detection
- creation of shipping documents and reports



**Thank you!**